

A hand holds a thin, white laser pointer with a black grip. A vibrant red ribbon swirls elegantly around the beam of light, creating a dynamic, circular pattern against a plain white background. The ribbon's movement suggests a wave or a dance, visually representing the 'Beauty Waves' mentioned in the text.

icoone®
L A S E R

Beauty Waves

Micro Actions, **Macro** Changes

The ultimate **TECHNOLOGY**
in **SKIN TREATMENT** for
BODY and **FACE** and **FOCUSED AREAS**.

The NEW icone® LASER is the innovative, non-invasive technology that grants effective facial and body treatments and offers at the same time a total relaxing experience. The combined effect of microstimulations with the led and laser light sources action, allows to deliver specific and focused treatments in adipose areas resistant to diet and exercise, obtaining faster and long-lasting results.



ROBODERM®

THE TECHNOLOGY THAT ACHIEVES RESULTS.

21 600

Microstimulations
every minute

—
**Visible
improvement**

LED
650
nm

LASER
915
nm

—
**Perfect skin
regeneration**

—
**Shapes
harmony**

— Body Treatments

Reduction of fat deposits, cellulite and stretch marks appearance improvement, draining, firming, remodelling, blood circulation improvement, tissue regeneration, push up effect on buttocks, breast lifting.





Beauty Waves

Tailored Treatments

A combination of different facial and body care programs designed to meet the demanding needs of both men and women of all ages.

ANTI-CELLULITE

Focused treatment for the reduction of cellulite blemishes. It helps smoothing the skin, improving drainage, blood circulation and harmonizing body shapes, reducing the "orange peel" skin effect.

TISSUE FIRMING

Thanks to the cellular stimulation, this treatment helps to stimulate collagen and elastin giving your skin an immediate firming effect and making your body slim and toned. It's especially suitable for toning your skin after weight loss.

ANTI-AGING

Treatments to enhance the quality and appearance of the skin, promoting tissue oxygenation and skin regeneration. They smooth wrinkles achieving a visibly younger look.

FACE & BREAST LIFTING

Treatment designed to oxygenate and revitalize your skin, reduce the double chin, decongest puffy eyes, plump lips, tone cleavage, firm neck and lift breast. For a rejuvenated and glowing aspect.

SILHOUETTE REMODELLING

Designed to work on resistant fat deposits such as the waistline and culotte de cheval, this treatment reshapes your entire figure reducing the fat deposits and giving a harmonious appearance.

LIGHT LEGS

Designed to boost blood and lymphatic circulation and to drain liquids, this treatment helps slim and reshape your legs by giving and immediate feeling of lightness and well-being.





LED / LASER

OUTSTANDING RESULTS

+25% Increase of the active stimulation surface

5,6 cm Average reduction of waistline circumference

80% Silhouette Improvement

100% Pleasant and relaxing feeling

SOURCE: Patients Survey

—
**Intense skin
toning**

—
**Full
rejuvenation**

— Face Treatments

Anti-aging, lifting, cellular regeneration,
fine and deeper line reduction, firming and
rejuvenating effect.

—
**Relaxing
Sensation**

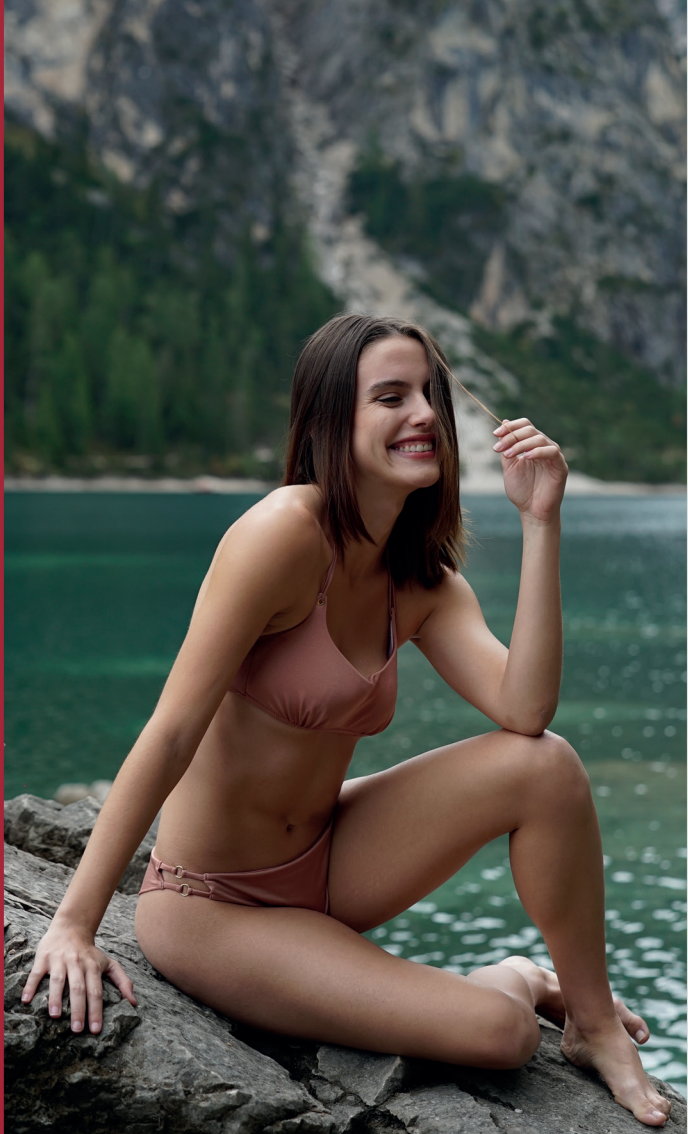


AWAKEN
BEAUTY



A customized technology for long lasting results

- Certain results, visible from the first session.
- Customized packages designed to satisfy specific needs (24 woman and 20 man programs).
- Suitable for any kind and quality of skin, even the more delicate or damaged.
- Accessible to the most sensitive and vulnerable areas, such as the eye area, lip contour, cleavage, neck, inner thighs and arms, knees and ankles.
- Every day treatments with no time limits.
- 100% Natural.
- Painless.
- Specific antiviral and antibacterial sterilization protocols.



i-Tech[®]
INDUSTRIES
The Science of Skin

www.icoone.com

